



SOLIHULL APPROACH IN N. IRELAND

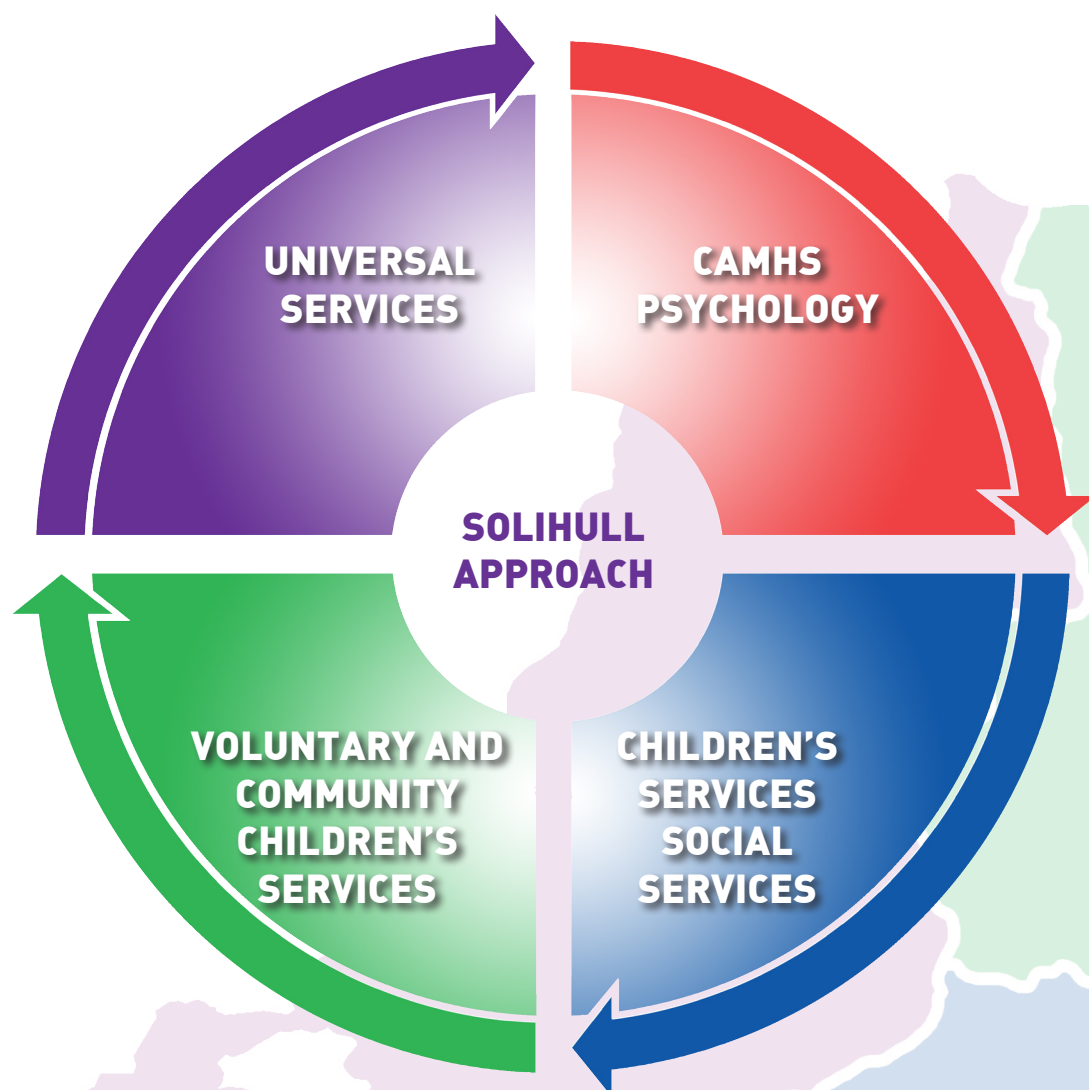
MULTI-AGENCY PARTNERSHIP BETWEEN EDUCATION AND PRACTICE



Understanding
your child

Solihull Approach

**FIT FOR PURPOSE. COMMISSIONED BY DEPARTMENT OF HEALTH & PUBLIC HEALTH
AGENCY FOR INFANT MENTAL HEALTH AWARENESS AND EARLY INTERVENTION**



WHAT IS EARLY INTERVENTION?

"...intervening early and as soon as possible to tackle problems emerging for children, young people and their families or with a population at risk. Early intervention may occur at any point in a person's life."

Delivering Social Change, Children and Young People's Early Action OFMDFM 2012

YEAR 1 (2013/14):

- ➔ 120 funded places
- ➔ 12 trainers per trust

YEAR 2 (2014/15):

- ➔ 240 funded places

THE ROLE OF THE CLINICAL EDUCATION CENTRE IN DELIVERING THE SOLIHULL APPROACH

- ➔ Regional Co-ordinator funded by PHA to work with Trusts to integrate model to Service delivery
- ➔ Delivery of the Foundation Programme and Train the Trainers across all Trusts
- ➔ Partnership - education and practice
- ➔ Theory to Practice – 4 Practice Sessions
- ➔ Development of Trainers to co-deliver with CEC and facilitate practice sessions
- ➔ Clinical Education Centre provides governance in education, quality assurance and evaluation.

WHAT PRACTITIONERS SAY...

Excellent programme, very relevant as a practitioner and manager

Relevant to anyone working with children / parents / families / foster carers

Interested in becoming a trainer if permitted by management

A fresh approach to Behaviour Management